

Harrison Bayou and Goose Prairie Creek – Perchlorate Data

Surface water samples are collected quarterly from each location in Harrison Bayou and Goose Prairie Creek unless the creek sampling location is dry.

Historic Surface Water Sample Data (in micrograms per liter)

Quarter	3 rd	4 th	1 st	2 nd	3 rd	4 th	1 st	2 nd	3 rd	4 th	1 st
Creek Sample ID	Jul 1999	Sep 1999	Feb 2000	Apr 2000	Aug 2000	Dec 2000	Feb 2001	Apr 2001	July 2001	Oct 2001	Jan 2002
GPW-1	<1.0U	-	4	<4.0 U	<4.0 U	<4.0 U	-	2.65	<4.0 U	<4.0 U	<4.0 U
GPW-3	<1.0U	<4.0 U	17	8	<4.0 U	<4.0 U	-	2.28	<4.0 U	<4.0 U	<4.0 U
HBW-1	-	<80.0 U	310	23	-	-	<4.0 U	-	<4.0 U	<4.0 U	<4.0 U
HBW-7	-	<8.0 U	370	110	-	-	<4.0 U	-	<4.0 U	<4.0 U	<4.0 U
HBW-10	-	<8.0 U	905	650	<4.0 U	-	<4.0 U	-	<4.0 U	-	-

Quarter	2 nd	3 rd	4 th	1 st	2 nd	3 rd	3 rd	4 th	2 nd	3 rd	4 th
Creek Sample ID	June 2002	Sept 2002	Dec 2002	Feb 2003	June 2003	Aug 2003	July 2004	Dec 2006	May 2007	Aug 2007	Dec 2007
GPW-1	<4.0 U	<4.0 U	18.3	18.6	59.9	-	2.25	-	<1.0 U	<1.0 U	10.7
GPW-3	<4.0 U	<4.0 U	5.49	12.6	14.7	-	2.2	-	<1.0 U	<1.0 U	7.48
HBW-1	<4.0 U	<4.0 U	<4.0 U	-	<4.0 U	99.3	<0.2U	<1.0 U	<1.0 U	122	<1.0 U
HBW-7	<4.0 U	<4.0 U	<4.0 U	-	<4.0 U	<4.0 U	<0.2U	<1.0 U	<1.0 U	1.02	<1.0 U
HBW-10	<4.0 U	<4.0 U	<4.0 U	-	<4.0 U	-	<0.2U	<1.0 U	<1.0 U	<1.0 U	<1.0 U

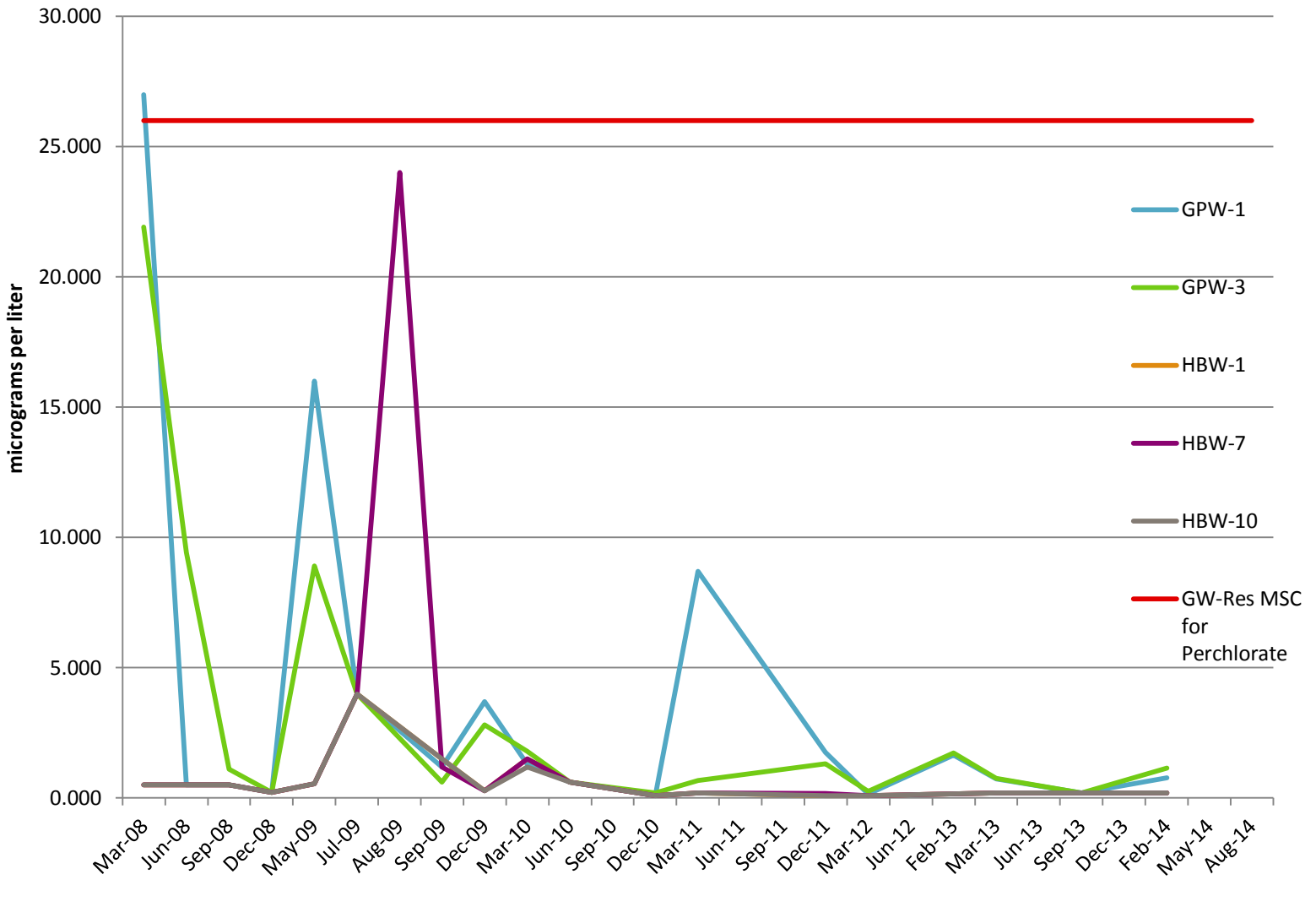
Quarter	1 st	2 nd	3 rd	4 th	2 nd	3 rd	3 rd	3 rd	4 th	1 st	2 nd
Creek Sample ID	Mar 2008	Jun 2008	Sep 2008	Dec 2008	May 2009	Jul 2009	Aug 2009	Sep 2009	Dec 2009	Mar 2010	Jun 2010
GPW-1	27	<0.5U	<0.5U	<0.22U	16	<4U	NS	<1.2U	3.7	1.3J	<0.6U
GPW-3	21.9	9.42	1.1	<0.22U	8.9	<4U	NS	<0.6U	2.8	1.8J	<0.6U
HBW-1	<0.5U	<0.5U	<0.5U	<0.22U	<0.55U	<4U	NS	<1.5U	<0.275U	1.5U	<0.6U
HBW-7	<0.5U	<0.5U	<0.5U	<0.22U	<0.55U	<4U	24	<1.2U	<0.275U	1.5U	<0.6U
HBW-10	<0.5U	<0.5U	<0.5U	<0.22U	<0.55U	<4U	NS	<1.5U	<0.275U	1.2U	<0.6U

Quarter	3 rd	4 th	1 st	2 nd	3 rd	4 th	1 st	2 nd	3 rd	4 th	1 st
Creek Sample ID	Sep 2010	Dec 2010	Mar 2011	Jun 2011	Sep 2011	Dec 2011	Mar 2012	Jun 2012	Not Applicable	Jan & Feb 2013	Mar 2013
GPW-1	dry	<0.1U	8.7	dry	dry	1.76	0.163J	dry	NC	1.65	0.735
GPW-3	dry	0.199J	0.673	dry	dry	1.31	0.261	dry	NC	1.74	0.754
HBW-1	dry	<0.1U	<0.2U	dry	dry	<0.1U	0.1U	dry	NC	<0.2U	<0.2U
HBW-7	dry	<0.1U	<0.2U	dry	dry	0.171J	0.1U	dry	NC	<0.2U	<0.2U
HBW-10	dry	<0.1U	<0.2U	dry	dry	<0.1U	0.1U	dry	NC	<0.2U	<0.2U

Quarter	2 nd	3 rd	4 th	1 st	2 nd	3 rd
Creek Sample ID	Jun 2013	Sept 2013	Dec 2013	Feb 2014	May 2014	Aug 2014
GPW-1	dry	<0.2 U	dry	0.766	dry	dry
GPW-3	dry	<0.2 U	dry	1.15	dry	dry
HBW-1	<0.2U	<0.2 U	dry	<0.2U	dry	dry
HBW-7	<0.2U	<0.2 U	dry	0.201J	dry	dry
HBW-10	<0.2U	<0.2 U	dry	<0.2U	dry	dry

Notes:
 J Estimated
 U Non-detect
 NC Not Collected
 NS Not Sampled
 dry Sampling location was dry
 - No historical data available

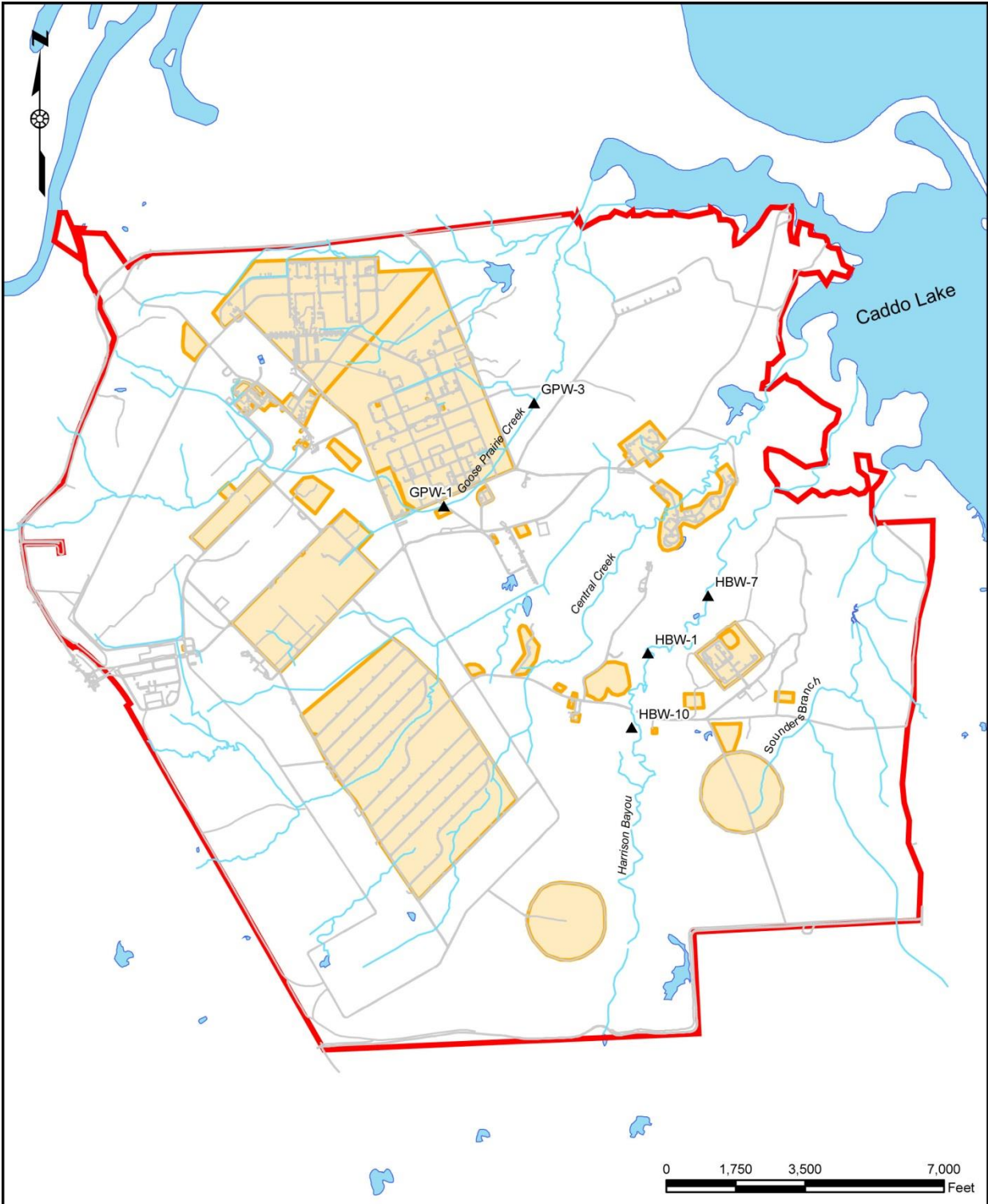
Surface Water Samples - Perchlorate



Notes:

Perchlorate Screening Criteria - TCEQ GW_{Res} (micrograms per liter) 26

Longhorn Army Ammunition Plant Map with creek sampling locations.



Legend	
▲	Surface Water Sampling Location
— (light blue)	Stream
— (grey)	Road
■ (yellow)	Site
■ (light blue)	Lake

U.S. ARMY CORPS OF ENGINEERS
TULSA DISTRICT
TULSA, OKLAHOMA

SURFACE WATER SAMPLING LOCATION
LONGHORN ARMY AMMUNITION PLANT
KARNACK, TEXAS